

Пользователь / Username	puhra
Дата / Date	19.04.2023 14:47:43
Имя файла / Filename	Размер 42 (рост 48) окружность груди 96 см, талия 78 см, бедра 102 см
Формат / Format	A4
Кол-во листов / Pages	21

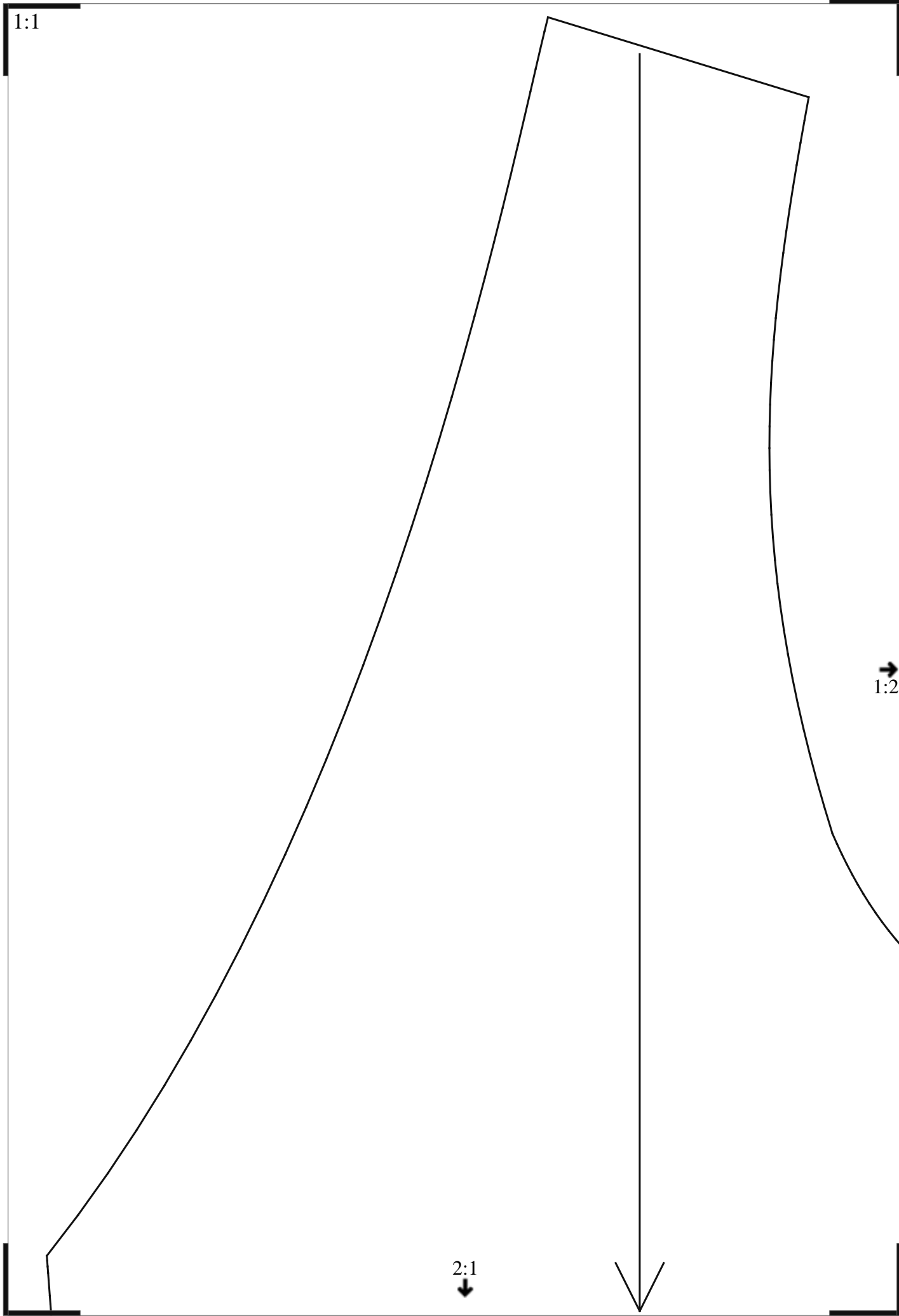


ВАЖНО

При печати этого PDF файла «Масштабирование страницы» или «Page scaling» должно быть равно «Нет» или «No»

Печать производите в «Истинный размер» или «Actual size»

Подробнее смотрите в разделе «Помощь» - «Печать PDF файлов»

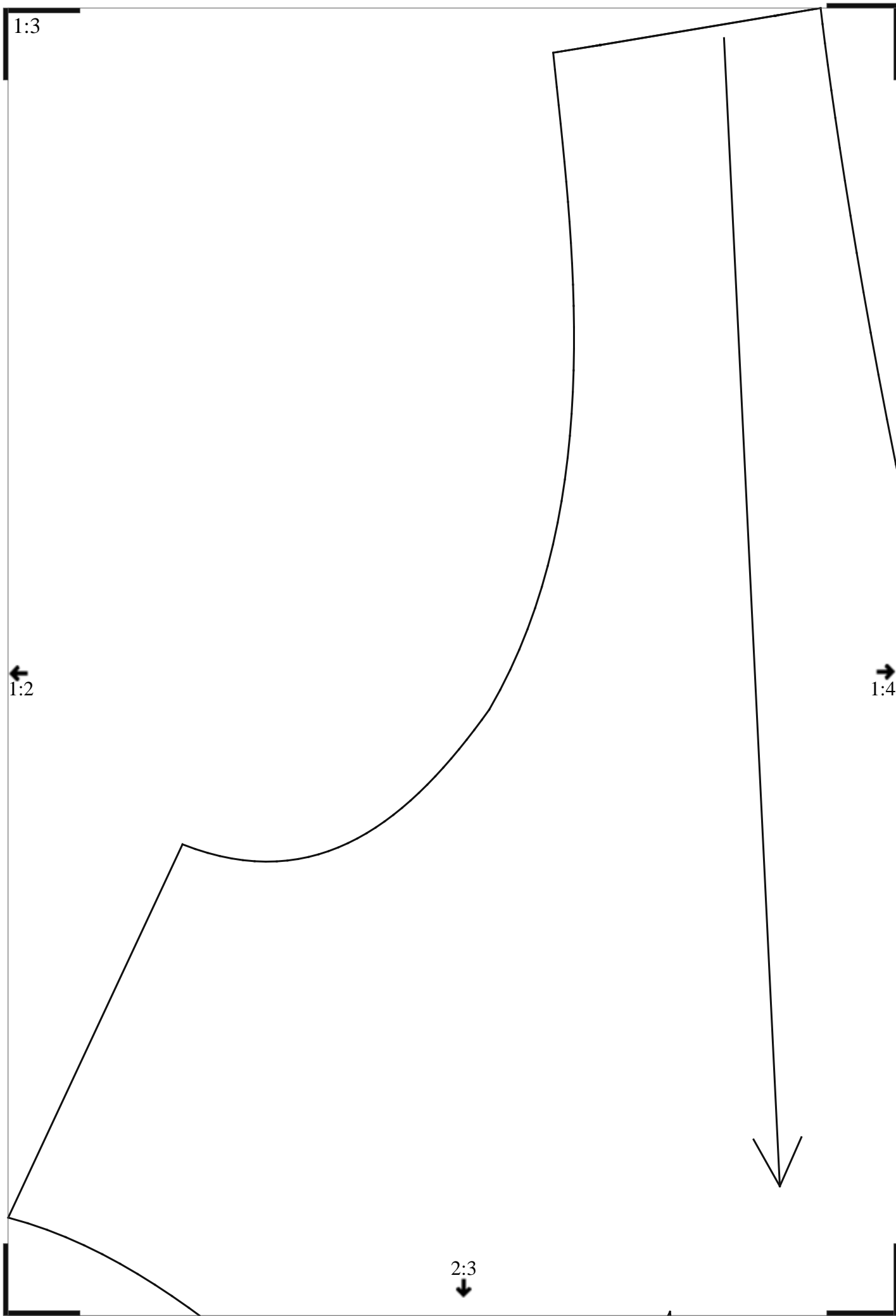


1:2

←
1:1

→
1:3

2:2
↓



The diagram features a large, irregular shape defined by several curved lines. A prominent curve starts near the top left, goes down and to the right, then curves back up and to the left. Another curve starts near the bottom left, goes up and to the right, then curves back down and to the left. A third curve starts near the top right, goes down and to the left, then curves back up and to the right. A fourth curve starts near the bottom right, goes up and to the left, then curves back down and to the right. These curves intersect to form a central region. Several arrows point towards this central region: one from the top left, one from the top right, one from the bottom left, and one from the bottom right. A label '1:4' is located at the top left, '1:3' at the top right, '1:5' at the bottom left, and '2:4' at the bottom right. A small asterisk is placed near the top left curve.

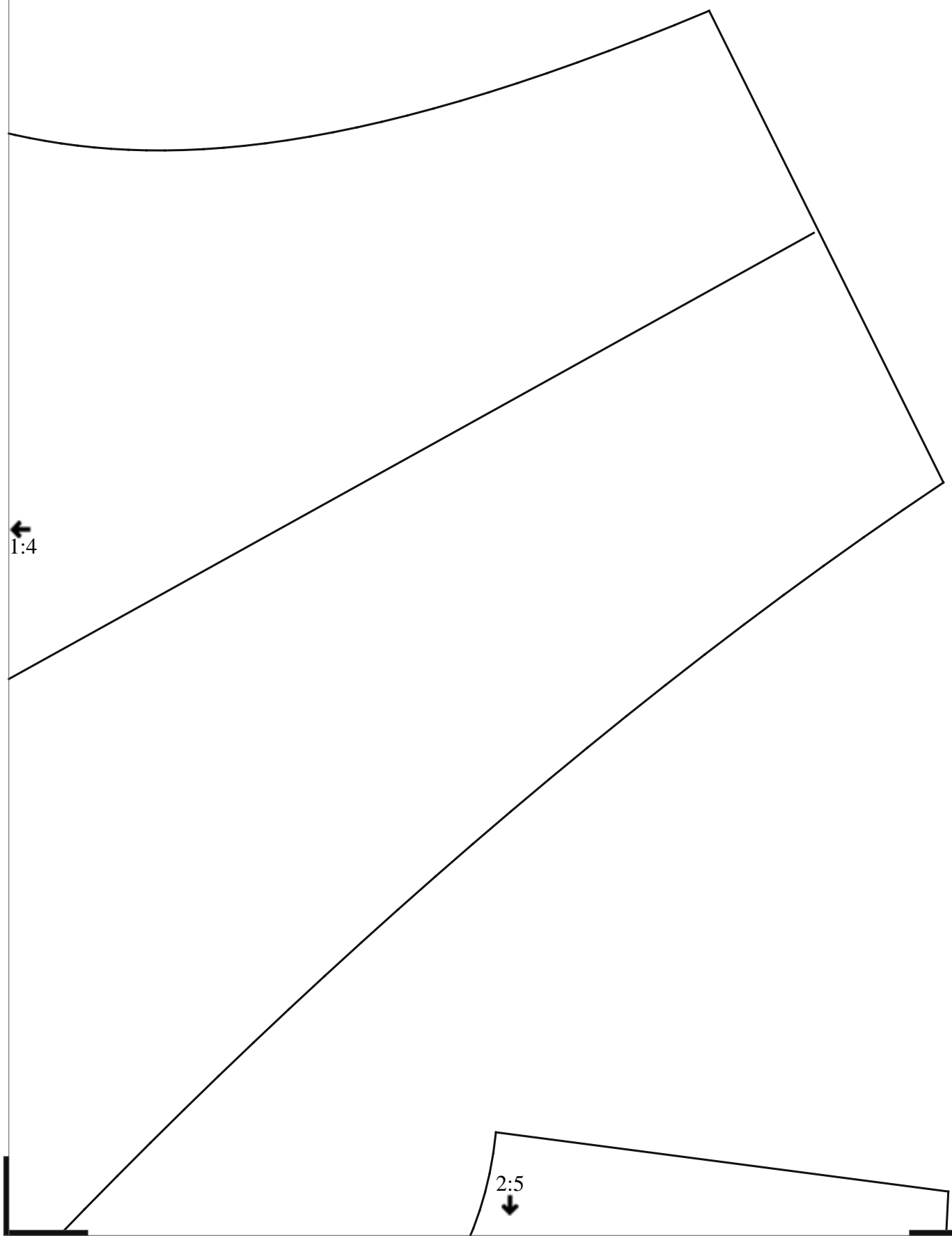
The diagram features a large, irregular shape defined by several curved lines. A prominent curve starts near the top left, goes down and to the right, then curves back up and to the left. Another curve starts near the bottom left, goes up and to the right, then curves back down and to the left. A third curve starts near the top right, goes down and to the left, then curves back up and to the right. A fourth curve starts near the bottom right, goes up and to the left, then curves back down and to the right. These curves intersect to form a central region. Several arrows point towards this central region: one from the top left, one from the top right, one from the bottom left, and one from the bottom right. A label '1:4' is located at the top left, '1:3' at the top right, '1:5' at the bottom left, and '2:4' at the bottom right. A small asterisk is placed near the top left curve.

The diagram features a large, irregular shape defined by several curved lines. A prominent curve starts near the top left, goes down and to the right, then curves back up and to the left. Another curve starts near the bottom left, goes up and to the right, then curves back down and to the left. A third curve starts near the top right, goes down and to the left, then curves back up and to the right. A fourth curve starts near the bottom right, goes up and to the left, then curves back down and to the right. These curves intersect to form a central region. Several arrows point towards this central region: one from the top left, one from the top right, one from the bottom left, and one from the bottom right. A label '1:4' is located at the top left, '1:3' at the top right, '1:5' at the bottom left, and '2:4' at the bottom right. A small asterisk is placed near the top left curve.

1:5

←
1:4

2:5
↓



2:1

1:1



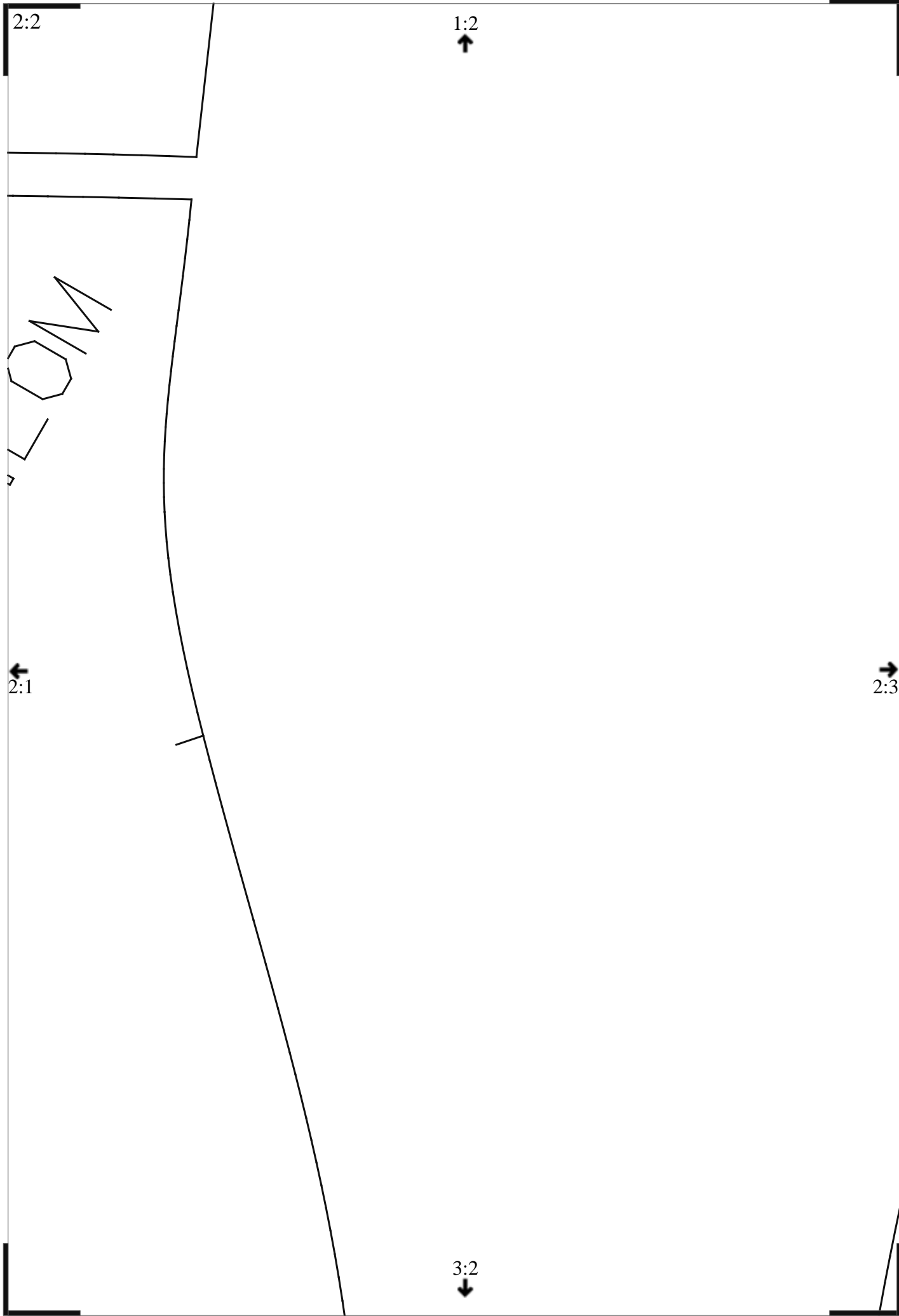
2:2



3:1



ББК ПОУК И МІРПІАР



2:3

1:3



2:2



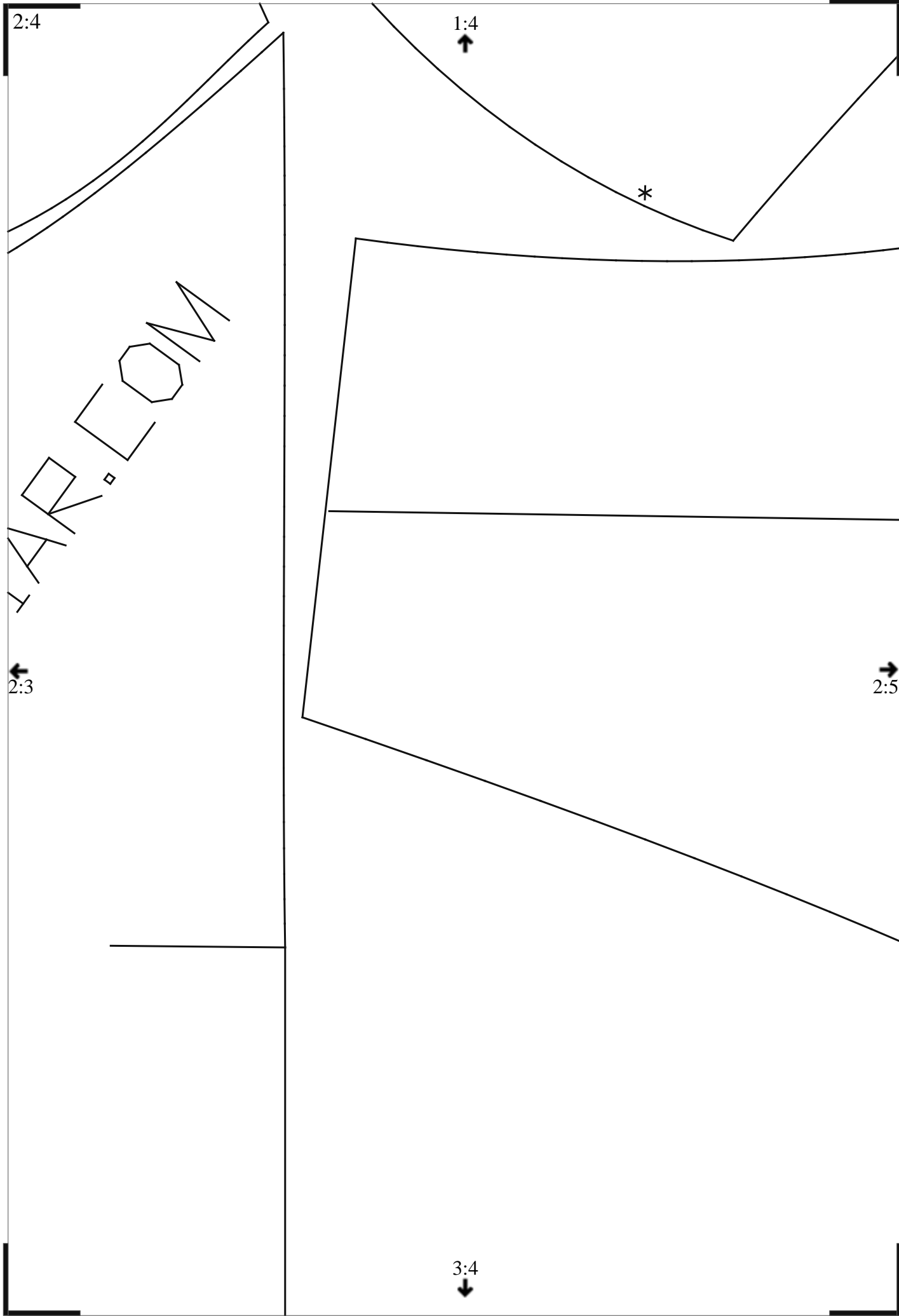
2:4

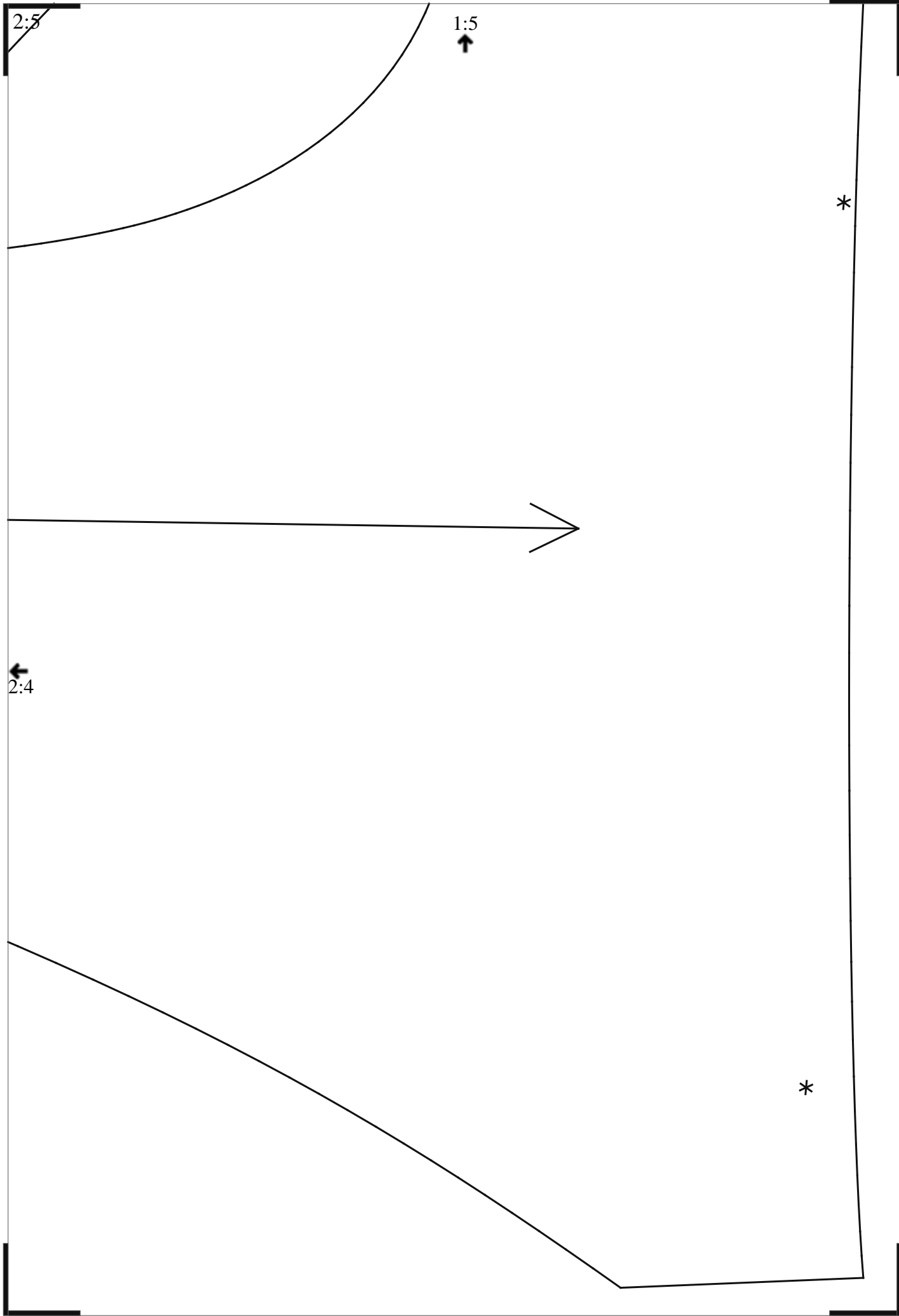


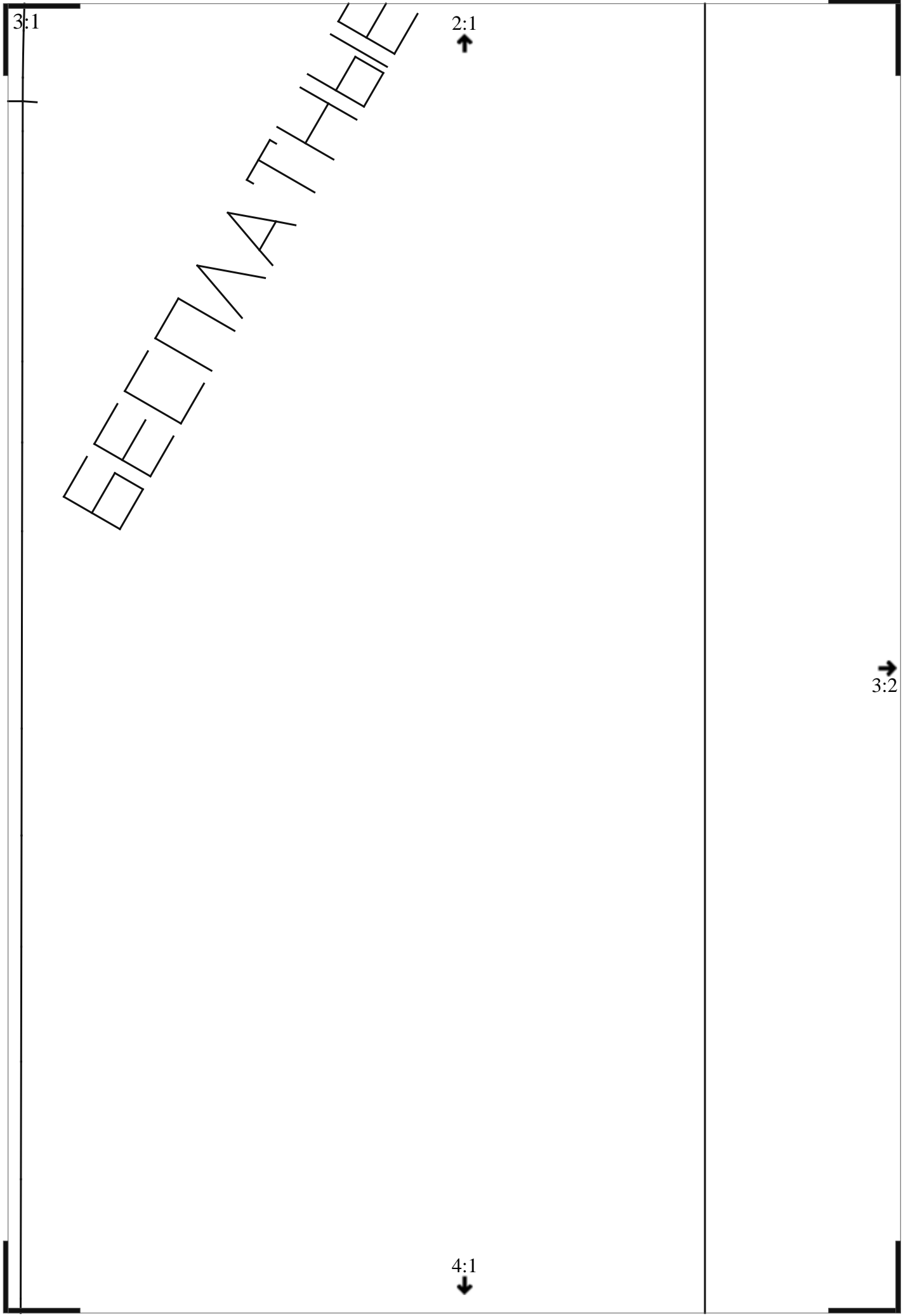
3:3

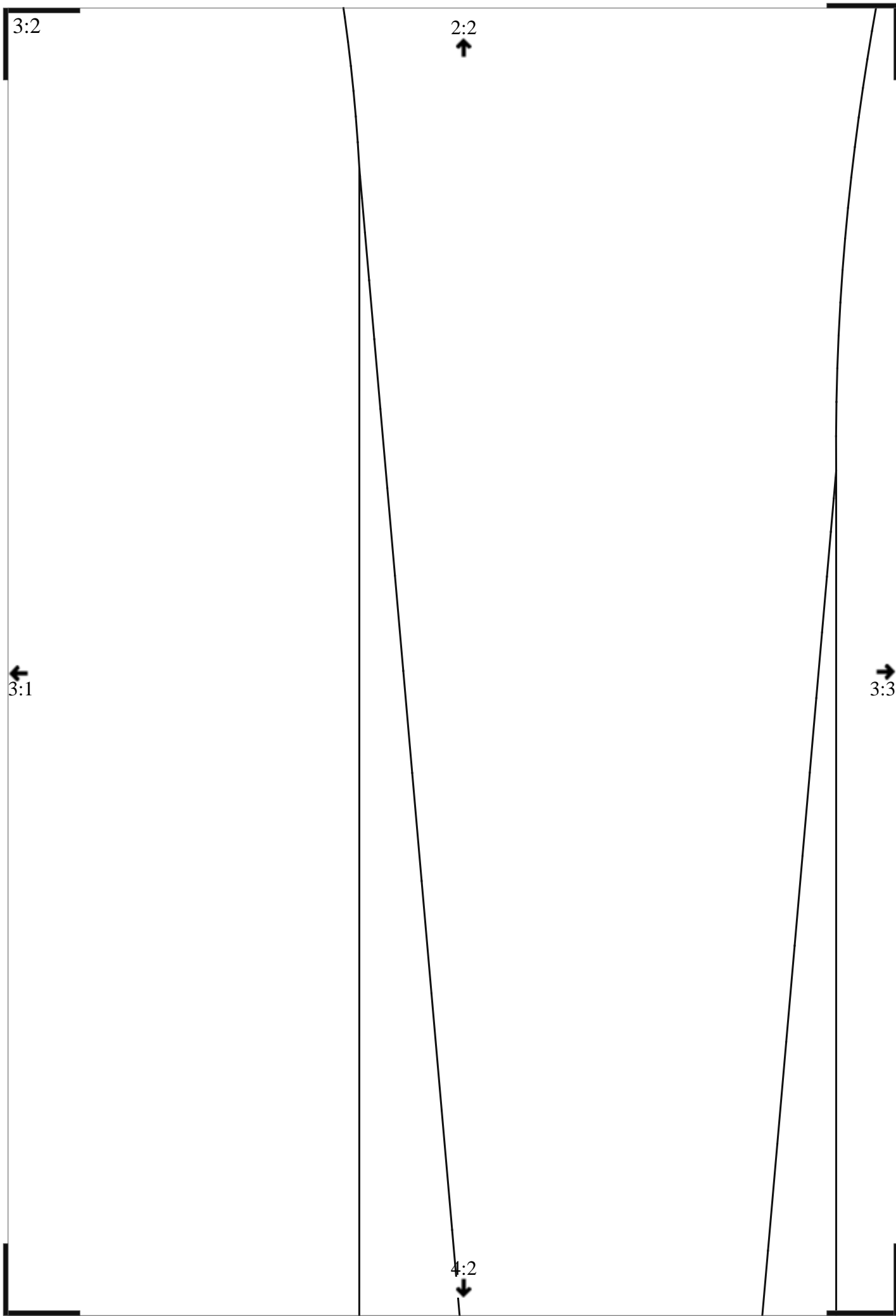


ББК 89.001.01
УДК 62.001.01
Мирот









$2:2$
↑

$4:2$
↓

$3:2$

←
 $3:1$

→
 $3:3$

3:3

2:3



3:2



3:4



SEENATH

3:4

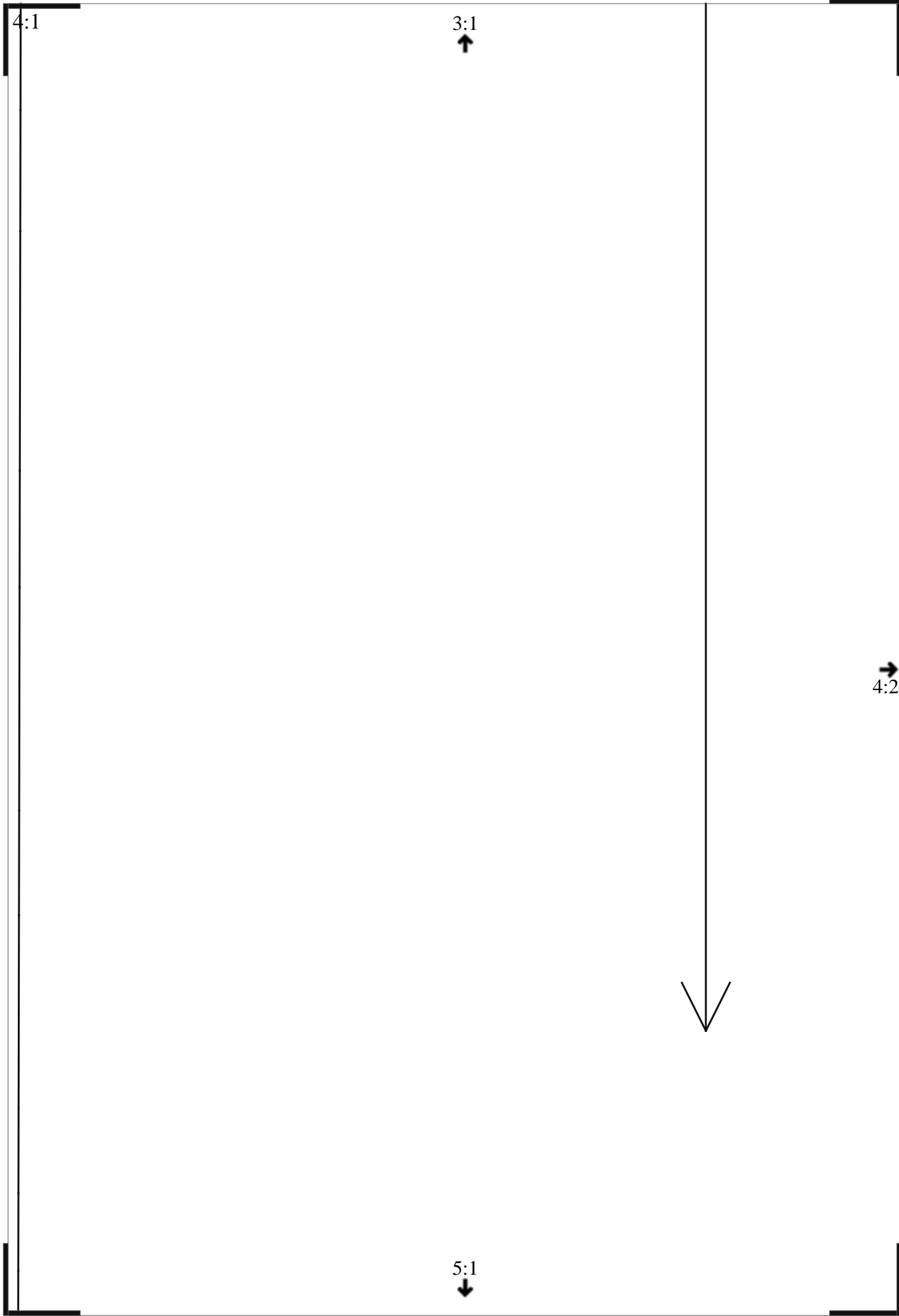
2:4

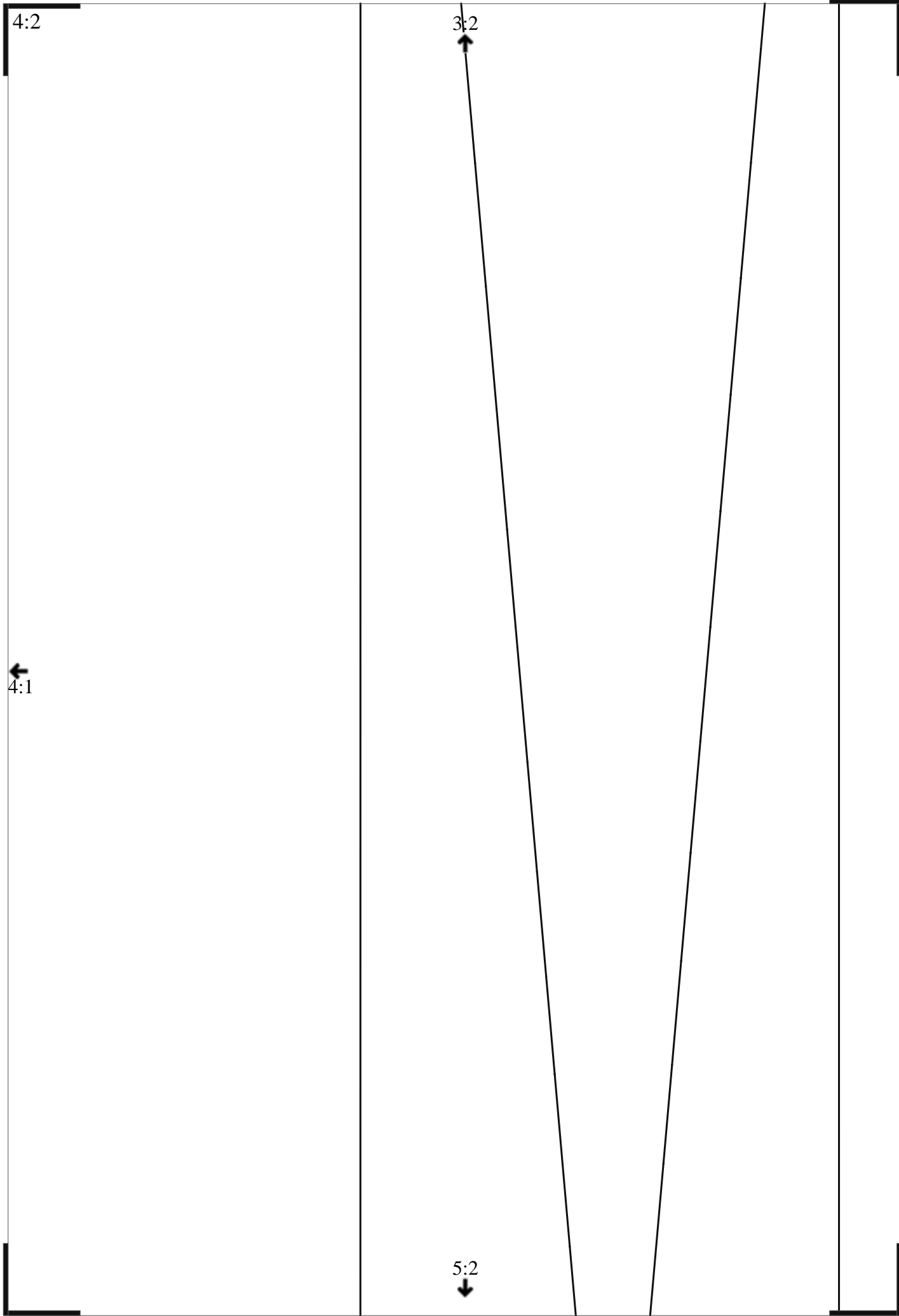


3:3

4:4







4:4

3:4



5:4



5:1

4:1



→
5:2

5:2

4:2



←
5:1

→
5:3

5:3

←
5:2

→
5:4

5:4

4:4



5:3

